

1.00 DESIGN CRITERIA

1.01 Design Assumptions
Location: CHICAGO, ILLINOIS
Building Code: 2019 Chicago Building Code
Wind Load Parameters:
Design Wind Speed: 130 mph
Exposure Category: B
Risk Category: II

Table with 2 columns: DEFLECTION CRITERIA and DEFLECTION LIMITS. Lists criteria for live load, dead load, and wind.

WALL STUD SCHEDULE table with columns: FLOOR, JOINT #, JOINT TYPE, JOINT SIZE & SPACING, JOINT TYPE, JOINT SIZE & SPACING.

EXTERIOR OPENING SCHEDULE table with columns: TYPE, JOINT #, JOINT TYPE, JOINT SIZE & SPACING, JOINT TYPE, JOINT SIZE & SPACING.

2.00 GENERAL DESIGN NOTES

- 2.01 Refer to Chicago Building Code for all applicable provisions.
2.02 All steel members shall be designed in accordance with the provisions of the Chicago Building Code.
2.03 All steel members shall be designed in accordance with the provisions of the Chicago Building Code.

JOIST SCHEDULE table with columns: LEVEL, JOIST TYPE, JOIST SIZE & SPACING, JOIST TYPE, JOIST SIZE & SPACING.

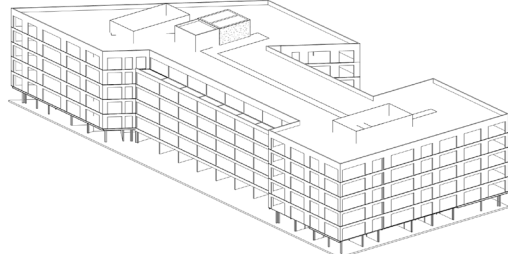
INTERIOR OPENING SCHEDULE table with columns: TYPE, JOINT #, JOINT TYPE, JOINT SIZE & SPACING, JOINT TYPE, JOINT SIZE & SPACING.

3.00 METAL DECK

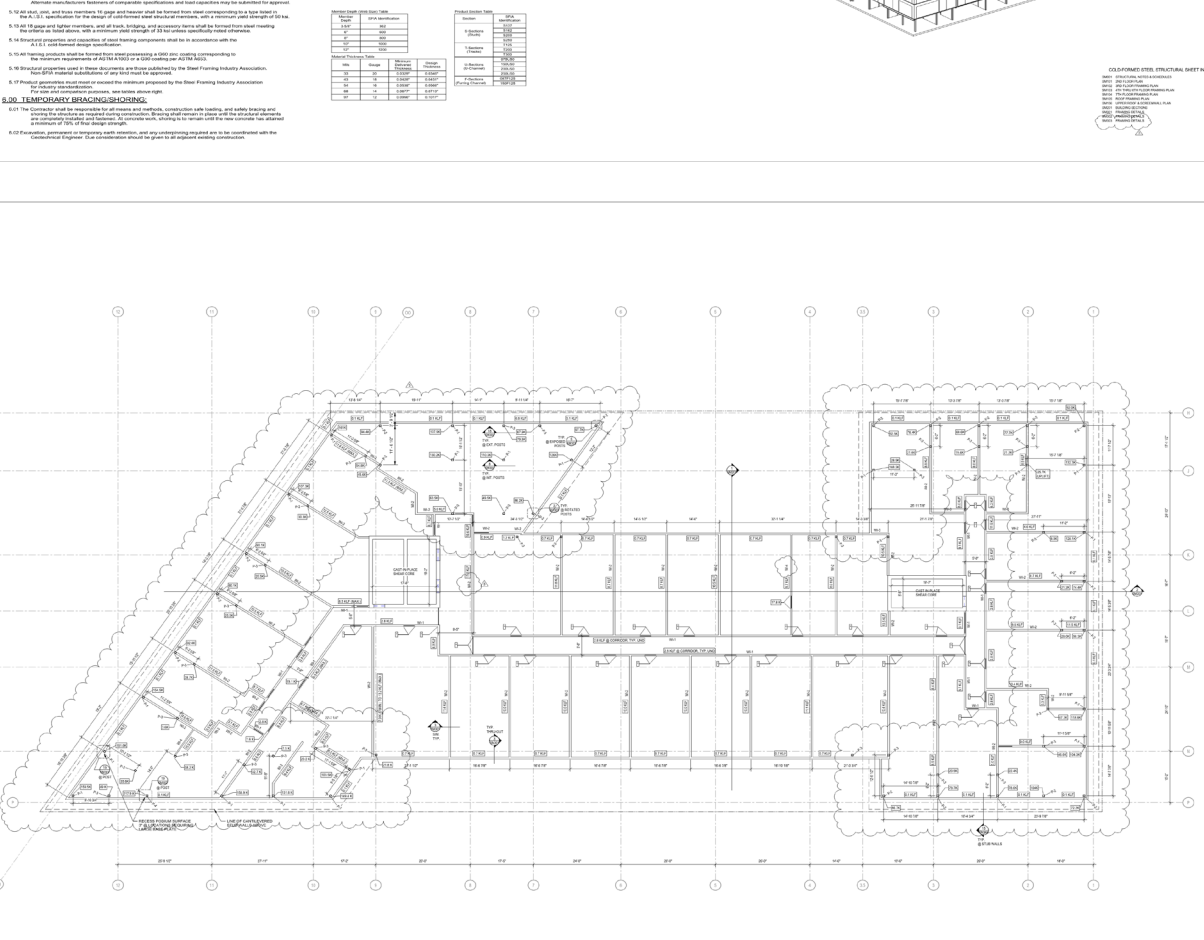
- 3.01 Metal Deck shall be designed in accordance with the provisions of the Chicago Building Code.
3.02 Metal Deck shall be designed in accordance with the provisions of the Chicago Building Code.

NOTES TO THE CONTRACTOR:
1. REFER TO DETAIL SHEETS FOR CONNECTIONS TO CONCRETE AND MASONRY.
2. REFER TO DETAIL SHEETS FOR CONNECTIONS TO CONCRETE AND MASONRY.

NOTES TO THE CONTRACTOR:
1. REFER TO DETAIL SHEETS FOR CONNECTIONS TO CONCRETE AND MASONRY.
2. REFER TO DETAIL SHEETS FOR CONNECTIONS TO CONCRETE AND MASONRY.



4.00 CONCRETE SLAB 2ND FLOOR FRAMING PLAN

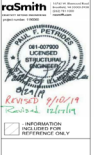


CONCRETE SLAB 2ND FLOOR FRAMING PLAN
SCALE: 1/8" = 1'-0"
DATE: 10/15/2023
PROJECT: FLATS Blue Island

Professional engineering stamp for SM001, including project name 'FLATS Blue Island', date '10/15/2023', and engineer information.

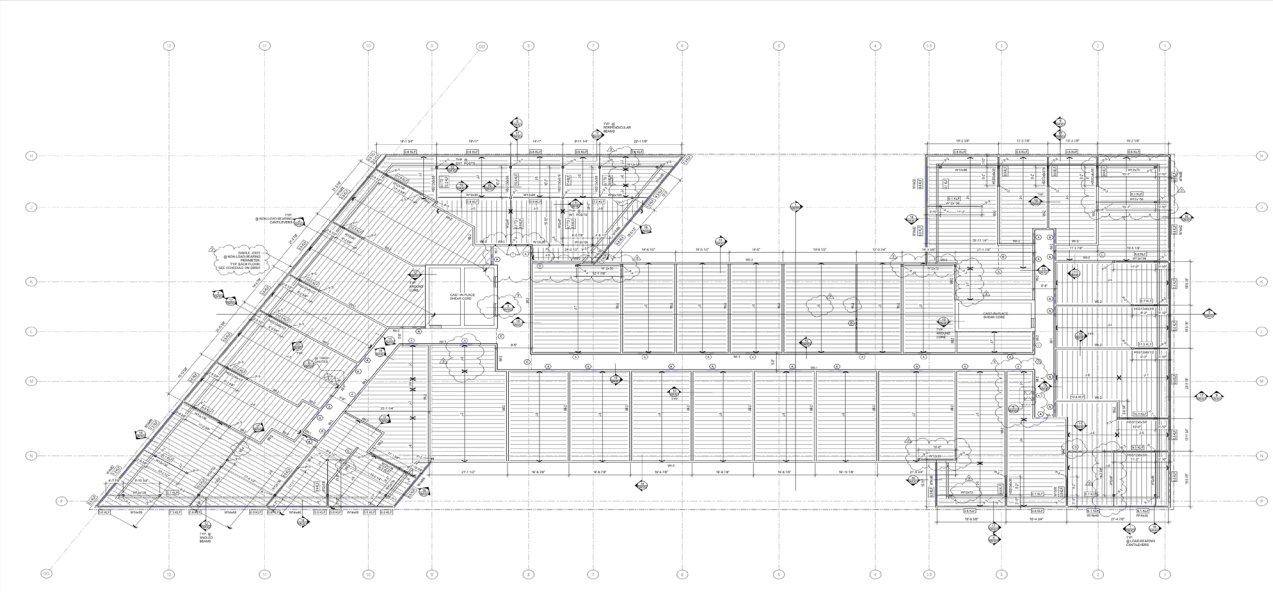
Professional engineering stamp for SM101, including project name 'FLATS Blue Island', date '10/15/2023', and engineer information.

AREA FOR CITY APPROVAL, STAMP

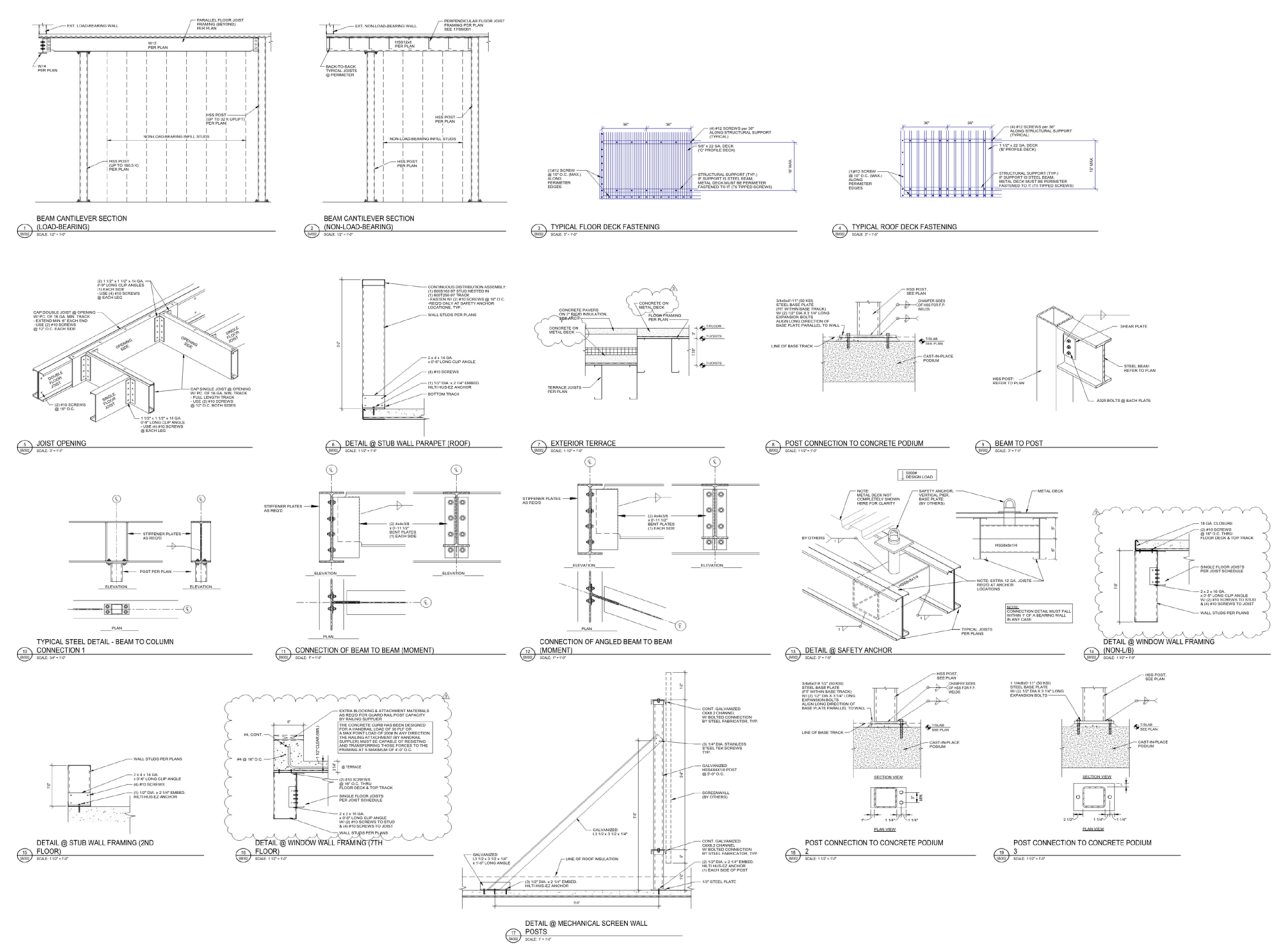


FLATS Blue Island

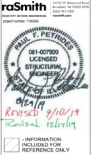
DATE: 08/17/2019	PROJECT: FLATS Blue Island
DRAWN BY: [Name]	CHECKED BY: [Name]
SCALE: 1/8" = 1'-0"	DATE: 08/17/2019
3RD FLOOR FRAMING PLAN	
SM102	



**T-STEEL 3RD FLOOR FRAMING PLAN**  
 SHEET NO. SM102 OF 102 SHEETS  
 DATE: 08/17/2019  
 PROJECT: FLATS Blue Island  
 DRAWN BY: [Name]  
 CHECKED BY: [Name]  
 SCALE: 1/8" = 1'-0"  
 DATE: 08/17/2019



AREA FOR CITY APPROVAL, STAMP



FLATS Blue Island

DATE: 08/17/2019	PROJECT: FLATS Blue Island
DRAWN BY: [Name]	CHECKED BY: [Name]
SCALE: 1/8" = 1'-0"	DATE: 08/17/2019
FRAMING DETAILS	
SM302	

SM302